

Southwest Idaho Woodturners Association

The Treasure Valley Woodturner's club

Meets monthly on the 2nd Tuesday at 6:30 PM

At the Woodcraft store in Boise ID.

7005 W. Overland Rd

Boise ID.



[http://www.swiwt.com/.](http://www.swiwt.com/)

October 2018

Club Officers

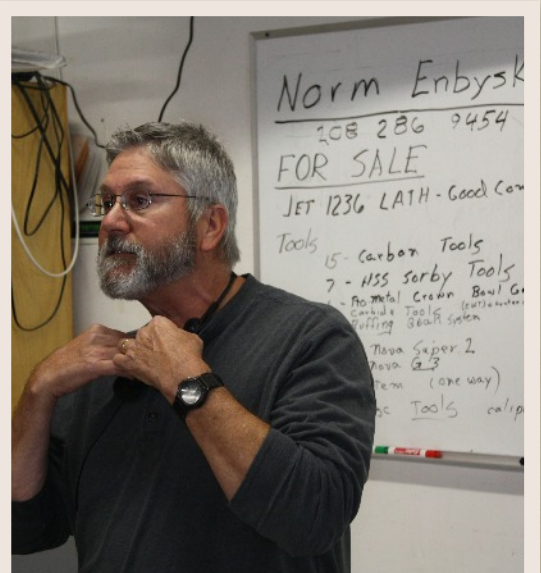
President:	Aaron Cornell
Vice President:	Scott Taylor
Secretary:	Tom Turco
Treasurer:	Tom Turco
Librarian:	Liz Meyer & Marlise Schmidt
Directory:	Marcia Miller
Newsletter:	Ellis & Marcia Miller
Advisory Board:	Marcia Baker Sid Bright Gary Smith

Contents

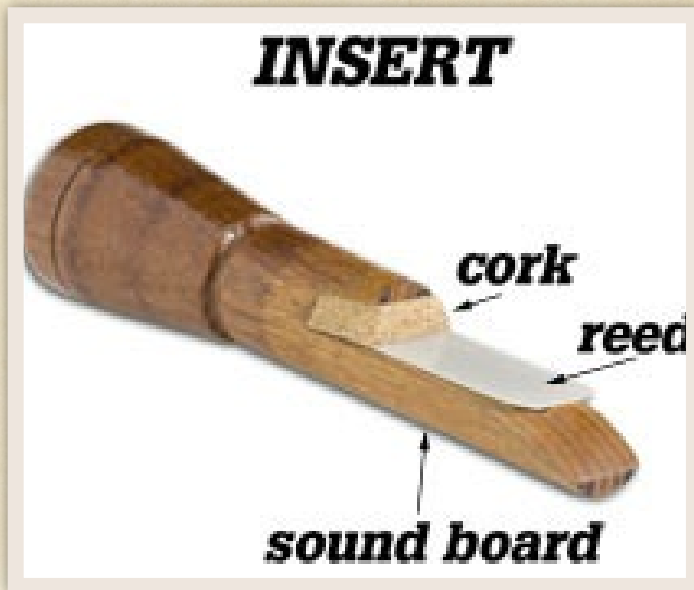
Demonstration:	Page #
	2-5
Show and Tell	6-11
Break Time	12
Bowl Exchange	13
Club Business	14
Happy Raffle Winners	15
New Members	16
Up Coming Events:	17

Demonstration

Greg Richardson gave us a demonstration on making and finishing duck calls and pepper mills. He showed us how to use CA finish on larger turned items. He has entered his duck calls in the Artistry in Wood shows, and won several blue ribbons and a best of show. He uses hardwood blanks and segmented blanks for his duck calls and pepper mills. He has been making duck calls for 20 years.

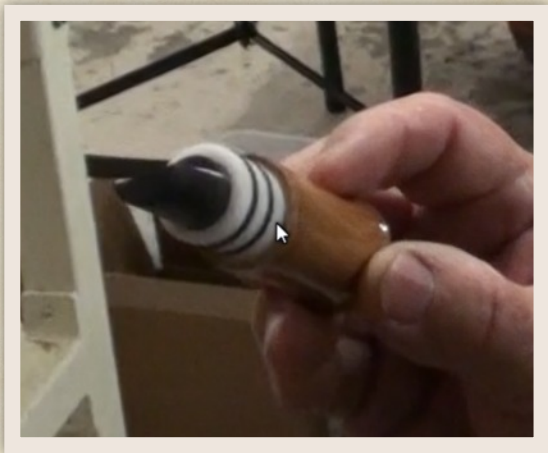


He will make segmented disks in the design and size to fit his planned project. You can see two of the disks in the picture to the right. The picture also shows three custom tools to make his insert, that consists of the sound board, reed and the cork that holds the reed.



The picture on the left was taken off of the internet. It shows what the insert looks like and how it is assembled. The picture on the right shows one of the inserts that Greg made.

The custom tools shown in the top right picture were used to make the reed and size the sound board and the cork. The reeds are made out of Mylar. Greg buys the Mylar in large sheets. He will slide it into the reed cutting jig, left side of the live center. The jig cuts the reed to the right size for his duck calls. He turns the wooden part of the duck call insert to 5/8" diameter for the sound board section. He puts this section into the holding jig, right side of the live center. He can now make very accurate cuts for the sound board.

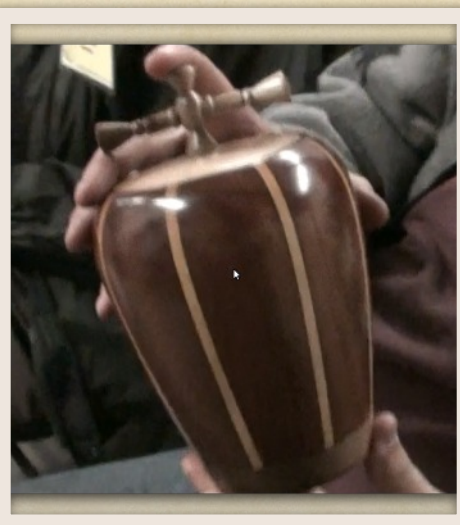


He has also used Delrin to make his inserts.

He cuts his segments on his miter saw. He builds a jig for the segmented cut he is using. The one shown at the right was labeled $22 \frac{1}{2}$ degrees, 8 segments. The jig has a bolt that attaches to the fence on the miter saw.



Greg uses CA for finishing. He uses a slow speed on his lathe, about 350 RPM's. With larger pieces he will use a little faster speed. He will start by applying 15 coats of thin CA, using an accelerator between each coat. He holds the accelerator back from the piece, giving it a quick spray. Then, sanding with wet and dry paper, he starts with 400 grit graduating up to 2000. He uses a folded up piece of paper towel to apply the CA. On smaller pieces, he puts the CA on the towel, and then slides it across the piece. On larger pieces he will pour generous amounts of CA on the towel, while moving it across the piece. This will cause some CA glue to be thrown off of the piece. You must wear safety glasses and a smock. Cover the lathe bed to protect from the flying CA glue. If you want a satin finish, he will wet sand and then finish with Watco lacquer.



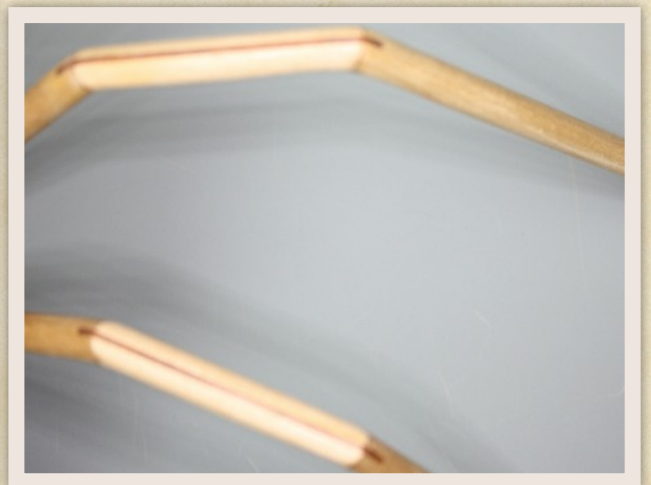
A larger piece finished with CA.



Top left, is a collection of Greg's work. Top right, Greg used colored epoxy to fill area's of a very weathered burl. Bottom left, is a pepper mill. Bottom right, are two pepper mills. The pepper mill closest to the front is a segmented Baltic birch. A friend of Greg's made him a sled for the table saw to allow him to cut the miter's on the table saw. The sled hung on his wall for about 5 years without being used. Greg said he is known for his repurposing of wood. As a result, the sled became a pepper mill.

I might not make a duck call, but your technique for finishing with CA will help many of the club members, including me. Great job Greg, Thank you.

Show and Tell



Micheal Kingsley brought in this candy dish dressed up for Halloween as a spider. The spider is made out of Maple, Poplar and Canary Wood. The body is a Maple Burl bowl which is filled with candy. The spider is 18" from leg tip to leg tip, and is 3 $\frac{1}{2}$ " high. The picture on the right shows the spline joints in the legs.



Charles Gerdes brought in this very thin, Norfolk Island Pine bowl. The bowl is 5 $\frac{3}{8}$ " diameter and 3 $\frac{1}{2}$ " high, and he used Watco oil finish. The pen on the right is made from solid brass.

Mobius Strip



Pat White brought in this Mobius Strip. I have always looked at this as a segmented turner trying to give me a nightmare. Pat broke it down for us. He said you have to make 3 bowls the same size. The bottom is a waste wood, like MDF. Then cut and assemble. I am still in a nightmare. He said this strip fell off of the table, and broke into several pieces. Into the burn box it went. Pat was out of town for about 6 month's. When he came home, he found the strip in the box, "I can fix that", and fix it, he did. I wanted to know just what this Mobius strip is: Wikipedia here I come.

Copied from Wikipedia

"A ray-traced parametric plot of a Möbius strip. If an ant were to crawl along the full length of the strip, it would return to its starting point having traversed both sides without ever crossing an edge."

It works, the ant go's around the whole thing on both sides. I gave you two views so you can see how it works.

Stunning work Pat. Now, I heard someone yell out "demo" as you showed your work. Keep this in mind, if you do a demo on the Mobius Strip, you write the newsletter demonstration pages, please.



Dan Oliphant brought in the above hollow forms. He turned them, and hand carved them. The embellishment work was done with a Dremel tool using a ball bit. The wood is red Eucalyptus with an oil finish. The left one is 7" diameter and $7 \frac{1}{4}$ " high. The right one is $3 \frac{3}{4}$ " diameter and $6 \frac{1}{2}$ " high.



Rich Froehlich brought in this magnetic pen. He made the blank by casting aluminum shaving provided by Aaron Cornell.



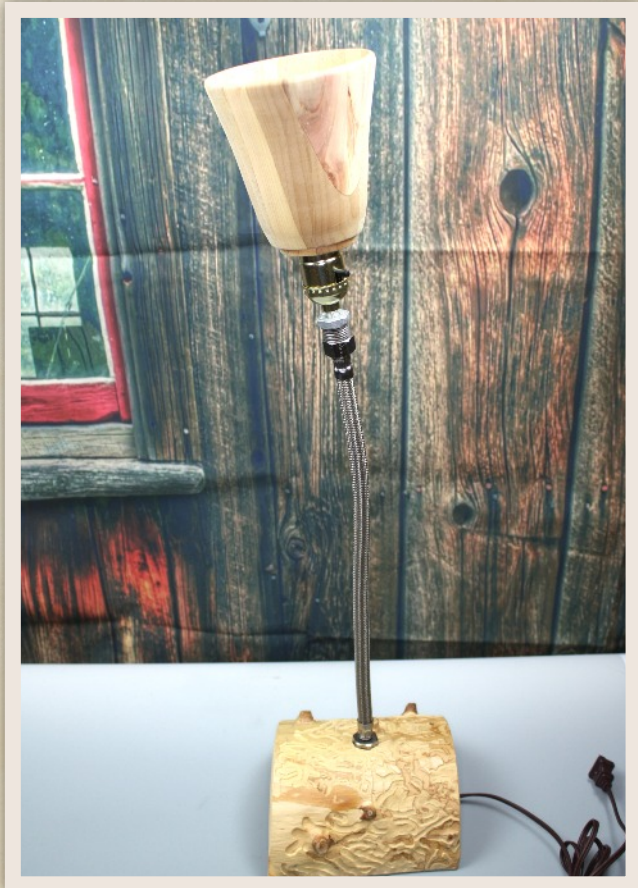


Amos Cartwright brought in the two Black Walnut lidded boxes. The box shown in the top left and center picture is 4 $\frac{1}{2}$ " high and the base diameter is 3". The box, top right is 4" high, and 2 $\frac{1}{4}$ " diameter. The Box Elder box, row 2, left side, is 7 $\frac{3}{4}$ " high and 3" diameter. The Maple Burl vase, row 2, center, is 5" high and 3 $\frac{1}{8}$ " diameter. The Maple plate is shown on the bottom row. All are finished with friction polish.



Clyde Garner brought in everything on pages 10 and 11. The first fruit bowl is 11 5/8" diameter and 1 3/8" high. The second picture is a platter, it is 11 5/8" diameter and 1 3/8" high. The first bowl on the bottom row is 5" in diameter and 3/4" high; it is segmented. The second bowl, bottom row is 4 1/2" diameter and 1 3/4" high. The third bowl is a 3 piece segmented. It is 6" diameter and 1 3/8" high. Everything is finished with a wax finish.





The top row of pictures shows the lamp and segmented lamp shade. The first picture on the bottom row is a close up of the lamp base. It shows the wood bore tracks. The bottom right picture is a mallet that Greg made. He used a thrift store electric sandwich maker to heat up plastic bags. He put the heated up bags into a can and applied pressure. When the bags cooled, he took them out and made a mallet.

Break Time



My wife, Marcia, wanted to do a Halloween themed treat. She ended up deciding to make a couple of pound cakes and decorated them with some whipped cream and Halloween colored sprinkles. Then she got some Halloween treats so there was a variety.

Marcia helps me with the photography. She brings the show and tell items to me and then returns them after I take the pictures. It was getting time where Marcia had to go get the treats ready, but we still had a lot of pictures to take. Marcia asked Yoshiko Gerdes if she wanted to help. She jumped right up and said she would love to help.

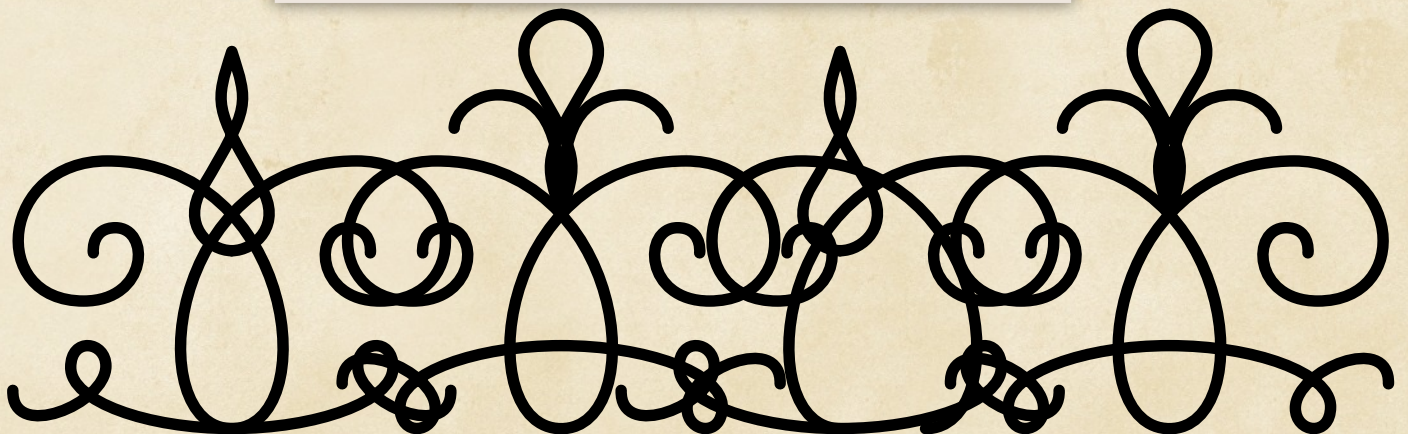
We want to thank Yoshiko for helping. Marcia was able to help me get the photography done on time, and everyone got their treats at the break.

Thank you Yoshiko.



Bowl Exchange

John Hinman won the last bowl of the month. He was unable to be at the meeting, so he arranged for this bowl to be at the meeting. Tom Horner is the lucky winner. Tom will be making something to bring for next month.





Club Business

Christmas Party

December 1, 2018

5:00 PM set up. Party starts at 6:00 PM

Location:

**South Minster Presbyterian Church,
6500 Overland, Boise**

More information will be available soon.

TURN FOR THE TROOPS

Nov. 10th, 8:00 AM at Woodcraft

Nov 9th please drop off your lathe at Woodcraft. Other drop off times can be arranged, contact Aaron.

Runners and assemblers are also needed.

The club elections are next month. Aaron, and the board, said they will all run for their respective positions next year. If someone else would like to run, they can be nominated at the Nov. Meeting.

The club is looking into a new web site. Aaron is trying to get someone from the company, who is providing the web site, to come to the next meeting.

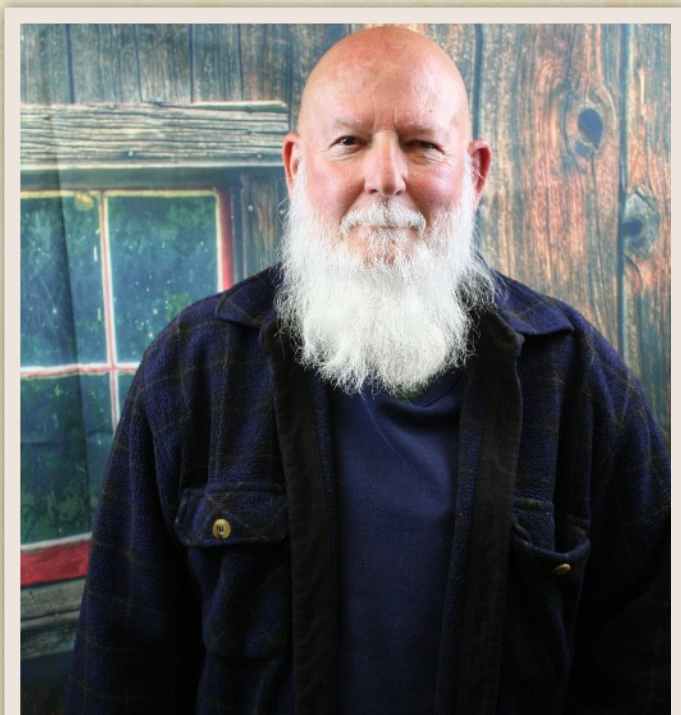
The new web site is going to be updating our pictures more often. Aaron has asked me to get better pictures during show and tell. The pictures we are trying to get are during show and tell, is one with each member as he/she tells us about the piece, and then a good picture of the piece. So, everyone, a little posing and looking at the camera, please! You may have noticed at the last meeting, Dan Kunz is using my video camera. I used to have it going in the background, mostly to get sound. When he is at the meetings from now on, he will be using the video camera. After that I can capture stills to use in the newsletter. Pose for Dan as well, please!

Happy Raffle Winners



New Members

Dan Oliphant



Peter Roan





Up Coming Events

Turn for the Troops

Nov. 10, 8:00 AM at Woodcraft

Drop off your lathe Nov. 9

Runners and assembly people are also needed.

Artistry in Wood

March 15,16,and 17th 2019

At JUMP, Boise

Oregon Woodturning Symposium

March 15, 16, 17, 2019

Albany Expo Center, Albany, Or.

[Oregon Woodturning Symposium.com](http://OregonWoodturningSymposium.com)