

# *Southwest Idaho Woodturners Association*

*The Treasure Valley Woodturner's club  
Meets monthly on the 2nd Tuesday at 6:30 PM  
At the Woodcraft store in Boise ID.*

*7005 W. Overland Rd  
Boise ID.*



<http://www.swiwt.org>

*Jan. 2020*

## *Club Officers*

<b>President:</b>	<b>Aaron Cornell</b>
<b>Vice President:</b>	<b>Sid Bright</b>
<b>Secretary:</b>	<b>Tom Turco</b>
<b>Treasurer:</b>	<b>Tom Turco</b>
<b>Librarian:</b>	<b>Liz Meyer &amp; Marlise Schmidt</b>
<b>Directory:</b>	<b>Marcia Miller</b>
<b>Newsletter:</b>	<b>Ellis &amp; Marcia Miller</b>
<b>Advisory Board:</b>	<b>Marsha Baker Gary Smith</b>

## *Contents*

<b>Demonstration:</b>	<b>Page #</b>
<b>Show and Tell</b>	<b>2-3</b>
<b>Break Time</b>	<b>4-9</b>
<b>Bowl Exchange</b>	<b>10</b>
<b>Raffle</b>	<b>11</b>
<b>Happy Raffle Winners</b>	<b>12</b>
<b>Club Business</b>	<b>13-14</b>
<b>Monte's Visit</b>	<b>15-16</b>
	<b>17</b>



# Demonstration



Sid Bright

Sid was elected Vice President in the last election. One of his duties is to schedule demonstrators for the club meetings. Sid took the first meeting demonstration. At the end of his demonstration, he asked for other members to volunteer to demonstrate. Contact Sid and let him know that you would be interested in demonstrating.





He decided to demonstrate turning a plate. To show how to keep your costs down, Sid used a 2 X 4. He jointed the sides, cut them to length and glued the edges together. After the glue dried, he marked his center. He then cut a disk (shown above) on the band saw. He made several disks at the same time.

Now is the time to mount the plate on your lathe, between centers. Use a drive center and the tail stock. True up the edge. True up the bottom (tail stock side) of the plate. Do you want a tapered bottom, an ogee shape or ?

Keep in mind how you are going to mount the plate when you turn it around. Most of us use a tenon. Cut the tenon the proper diameter and depth to fit your jaws. Finish off the bottom of the plate and the outside edge. The bottom can be sanded now. Turn the plate around and mount the plate.

Now you have to think about the design of the top of the plate. Do you want to roll the edge over and cut a taper to the bottom of the plate? Do you want to leave a ledge you can put designs on, and if so, how wide and what designs? Sid left a ledge on the plate about 1" wide. He tapered it with a slight slope to the center of the plate. He then used a point tool and put two decorative lines on the ledge. He then darkened the lines using a piece of Formica. Be careful, the Formica will get hot and could burn your fingers. I hold the Formica with pliers. Sid reminded us that you can get Formica samples at the Home Depot or Lowe's design centers.



# *Show and Tell*

Dan Oliphant



Dan made this Walnut Hollow Form out of Walnut. He finished it with Lacquer. The form is 5 inch's in diameter and 6 inch's high.



## Connis Wilson

1



2

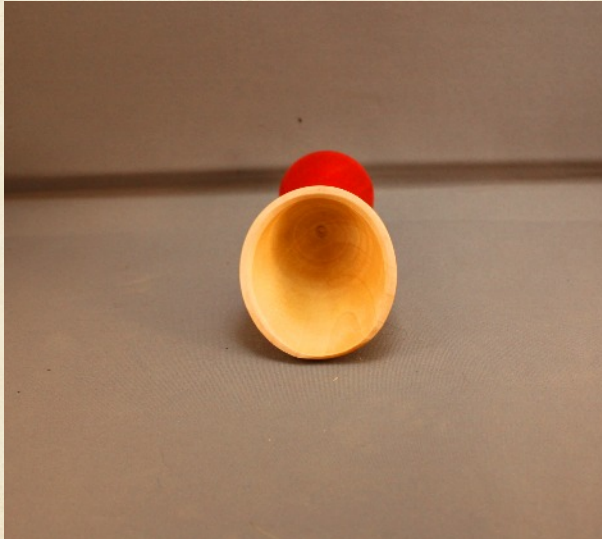


#1. Connis used the bowl from a board technique. He used Brazilian Cherry, Hard Maple, Black Walnut and Bacote. The finish is wipe on poly. The bowl is  $7 \frac{1}{2}$  inches in diameter and 4 inch's high.

#2. The dish is Apricot with a wipe on poly finish. The dish is 6 inch's in diameter and  $1 \frac{1}{2}$  inch's high.



## John Hinman



John made this little scoop out of Maple. He died the handle red. He finished everything with shellac and wax.

The scoop is 4 1/8 inches long and 2 inch's in diameter at the largest part.

---

## Micheal Kingsley



Micheal made this apple shaped box out of Walnut. He made a square handle on the top. The finish is shellac.

Micheal was asked, "Where are the carved feet?"





# Marsha Baker



Marsha made this off center bowl in her Women in Turning meeting. Marsha explained how to face off both sides of the blank. She then offset the piece by moving the the contact point of the tail stock and drive center. Make a tenon to fit your chuck and finish turning the bottom. Turn the piece around and mount it in the chuck. Turn the bowl and the face. Marsha reminded us to use caution with this type of turning. The edge of the bowl is no longer round and it wobbles in and out. It is very easy to let a finger or tool get too near the edge, and an accident can happen.



## Rich Froehlich



Rich brought in two pens that he has made. The top photo shows a hot rod themed pen. A picture of a hot rod on the pen barrel and the gear shift lever.

The bottom pen is Rich's pen that he has carried for many years. The pen is no longer available. Rich decided to take apart the pen and refinish it. This is the result, and it looks better than new.



## Pat White



Pat made this Vortex Coin Bank. On the information card that he filled out, one of the lines asks for the wood used. Pat wrote, "E. Indian Rosewood +multi". Pat, where does the +multi tree grow and where did you buy it?





# Break Time



Marcia put together an assortment of treats, trying to have something for everyone's taste.

When I tried to take her picture, she turned away like she usually does. Most of the time, I use my telephoto lens and sneak to the other side of the room and take her picture.



"Bob, photographer needs assistance. Can you make her smile?"  
Yes, got it.



# Bowl of the Month





# Raffle





# Happy Raffle Winners







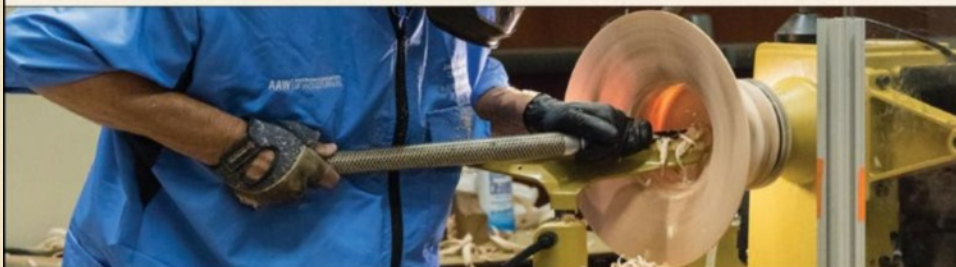


# Upcoming Events

## STEP UP TO THE PLATE!

**Accept the challenge. Up your game. Have a ball!**

Get your game on! Learn fast all in one venue. Get new ideas. Get recharged and motivated. Meet friendly turners from around the globe. **Join us!**



- For all skill levels
- 100+ demonstrations and panel discussions
- Internationally known demonstrators
- Trade show with 100+ exhibitor booths
- Exhibitions and Instant Gallery
- Auctions of turned art
- Charitable initiatives
- Networking opportunities
- **Register today!**



AAW'S 34th Annual  
International Symposium  
June 4-7, 2020  
Louisville, Kentucky  
Kentucky Exposition Center

Details and registration  
under "Events" at  
[woodturner.org](http://woodturner.org) or call  
877-595-9094 (toll free U.S.)



**INVITATION TO ARTISTS WHOSE WORK INCLUDES  
GOURDS – WOODTURNING – WOODCARVING  
WOODBURNING– SCROLLING – INTARSIA– MARQUETRY  
FINE WOODWORKING**

You are invited to participate in the

**2020 IDAHO ARTISTRY IN WOOD SHOW**

The Idaho Artistry in Wood 2020 Wood and Gourd Art Show will be held in the fifth floor exhibition hall at JUMP (Jack's Urban Meeting Place) on Saturday, March 21 and Sunday, March 22. JUMP is located at 1000 W. Myrtle St., Boise ID 83702. Show hours on Saturday are 9 a.m. – 5 p.m. and on Sunday, 10 a.m. – 4 p.m. The show provides an opportunity for artists working in wood and gourds to participate in a judged competition and display their creations to the public.

Five wood-working clubs (Treasure Valley Scrollers, Southwest Idaho Woodturners Association, Idaho Gourd Society, Idaho Woodcarvers Guild and Ada County Woodworkers) collaborate to make this one-of-a-kind show a major Northwest cultural attraction. The show will include woodcarving, woodturning, fine woodworking, pyrography, intarsia, gourds, marquetry, scrolling and other wood art. No affiliation with a club is required to participate.

Since moving to Boise's premier downtown exhibition hall, the show has gained increased attention, attracting over 400 entries from a multi-state area. Media, government and business support have contributed to the success of the show. Idaho's Treasure Valley is home to many notable artists who use wood and gourds as their medium. Several have won prizes in national and international competition. Aspiring artists will have the opportunity to meet and draw inspiration from these experts and have their work evaluated by professional judges.

Tools and materials used in creating wood and gourd art will be available for sale. In addition to the juried competition, there will be vendors, raffles, a silent auction, demonstrations and artwork sales. The Saturday night banquet and auction is a great place to relax and enjoy the company of other wood and gourd artists. It is not necessary to participate in the banquet to bid on auction items

The cost of entering work in the show is \$3.00 per piece if registered in advance or \$5.00 at registration, which will take place Friday, March 20, 12-5 p.m. at the JUMP 5<sup>th</sup> floor exhibition hall. Full details, including discount coupons, admission charges, registration, and each club's prospectus (entry guidelines) and other information can be found on the Idaho Artistry in Wood website, <http://idahoartistryinwood.org>.

For specific questions, contact Doug Rose, 208 856-8856, [roseboise@yahoo.com](mailto:roseboise@yahoo.com) or

Rich Froehlich (208-442-7167, [cdmrchieboy@gmail.com](mailto:cdmrchieboy@gmail.com)).



# Monte's Visit



Monte brought in high end model kits. They are cut in very thin laminated plywood. The parts are cut on a laser so they are very accurate. There are several different kits. I think they all have some functioning parts.

If you want to do something different, but still use your woodworking skills, check out the models on your next trip to Woodcraft.

