

# Southwest Idaho Woodturners Association

The Treasure Valley Woodturner's club

Meets monthly on the 2<sup>nd</sup> Tuesday at 6:30 PM

At the Woodcraft store in Boise ID.

7005 W. Overland Rd

Boise ID.



[http://www.swiwt.com/.](http://www.swiwt.com/)

February 2019

## Club Officers

President:	Aaron Cornell
Vice President:	Scott Taylor
Secretary:	Tom Turco
Treasurer:	Tom Turco
Librarian:	Liz Meyer & Marlise Schmidt
Directory:	Marcia Miller
Newsletter:	Ellis & Marcia Miller
Advisory Board:	Marsha Baker Sid Bright Gary Smith

## Contents

	Page #
Demonstration:	2-3
Show and Tell	4-14
Bowl Exchange	15
Happy Raffle Winners	16-17
Break Time	18
Club Business	19
New Members	20-21
Monte's Visit	22
Up Coming Events:	23
Important AAW info	24



# Demonstration



Paul Bucca gave us this months demonstration. The demonstration was on his "Flower Bowl, 2018. The bowl is an open segmented bowl with 1180 pieces. He used four different color woods, Maple, Yellow Heart, Bloodwood and Osage Orange.

When Paul made his bowl, he recorded the project on a DVD. He said that he wanted be be able to refer back to the recording to remember how he solved some of the problems he encountered while making the bowl. He played the DVD for us, while explaining the steps he took to make the bowl.

He then turned to a computer program to design his bowl. He entered all of the information about his bowl. The computer printed out a picture of the completed bowl (see the picture, top of page 3). He also got another page that included all of the different angles of each piece with the different colors he was using. It also calculated the size of the open segments. He decided to make a flat bottom for this bowl. He used the same colors and made a custom bottom for the bowl.





The computer printout above shows the parts needed and where they are put into the puzzle of a segmented bowl is.

By this time Paul has spent a lot of time cutting and sanding the pieces for the bowl. He uses a Driskell jig, shown on the right, to set each piece. The jig allows Paul to set the width of each open space and the protrusion of the segment. After putting in 4 layers, he will level the top of the layer. Each piece must be glued in by hand. Then you must watch for any glue squeeze out.



The segmented bottom of the bowl, above, has been glued up on a waste block and mounted on the lathe.



On the left, you can see where Paul has turned the lower rings and started adding additional rings to the bowl. From here on, he just's keeps adding pieces, like a giant jigsaw puzzle. He told us to use a small, very sharp bowl gouge, take small cuts and turn at a fast speed. Paul's segmented work is outstanding. If anyone needs help, call Paul.





## *Show and Tell*

### **PAT WHITE**



Pat White brought in the Walnut Platter with blue and green resin inlay. The bowl to the right is an unknown wood. Pat used his compass to draw the design. He then used a spiral down cut router bit to cut the inlay. He did this while the bowl was still a rough bowl blank. After the resin dried, he turned the bowl.





# GARY MOON



Gary made his style of a Native American flute. He used Black Walnut. Both ends and the eagle head are carved from Ivory. He obtained the ivory legally when he was a resident of Alaska. He finished the flute with two coats of mirror glaze.





# NICK PETERSON



Nick made the two segmented boxes out of Maple and Brazilian Cherry.





# KIM KEYS



Walnut with turquoise. 4 1/2" diameter, 5 3/4" high. Linseed oil finish.



Maple bowl with a Walnut oil finish. 9 1/8" diameter, 8 1/2" high. Kim is a new turner, and this is her first bowl. She was very excited to show it off.



Maple Vase with turquoise. 4" diameter and 4 3/4" high. Linseed oil finish. Kim told us about a lesson she learned. When you cut a groove for veneer inlay, keep the shoulders square, or slightly beveled in, to hold the veneer in place. She used turquoise to fill the groove.





# CONNIS WILSON



Ash, hollowed bowl. Wipe on Poly finish.  
8 3/8" diameter, 3" high.



Connis got the Ash from Monte at Woodcraft. Monte told him to "get that piece of wood out of my store", so he did. This is what it turned into.

The middle bowl was wood he got from the state fair. He was demonstrating wood turning at the fair and the wood was left there for any demonstrator to use.



English Walnut, hollowed bowl. Wipe on Poly.  
6" diameter, 3" high.



Ambrosia Maple & F.O.G. Roof. Poly finish.  
This is Connis's first bird house.





# SID BRIGHT



Sid won this wood in a raffle a few months back. It is Milo from Hawaii. The wood was donated by a new member, Charles Gerdes. Sid said he didn't use any finish on this bowl.



The goblets are Black Walnut and Sycamore. The goblets go from 7" high to 3" high. The diameters are from left to right; 2 1/2", 1 3/4", 2" and 1 7/8".





# RALPH WEAVER



Ralph brought in two BSU football pens. The top of the pen is cast like a football stadium. The clip is a football player. The clip points to the center band that shows yard markers. The tip is engraved to look like a football.

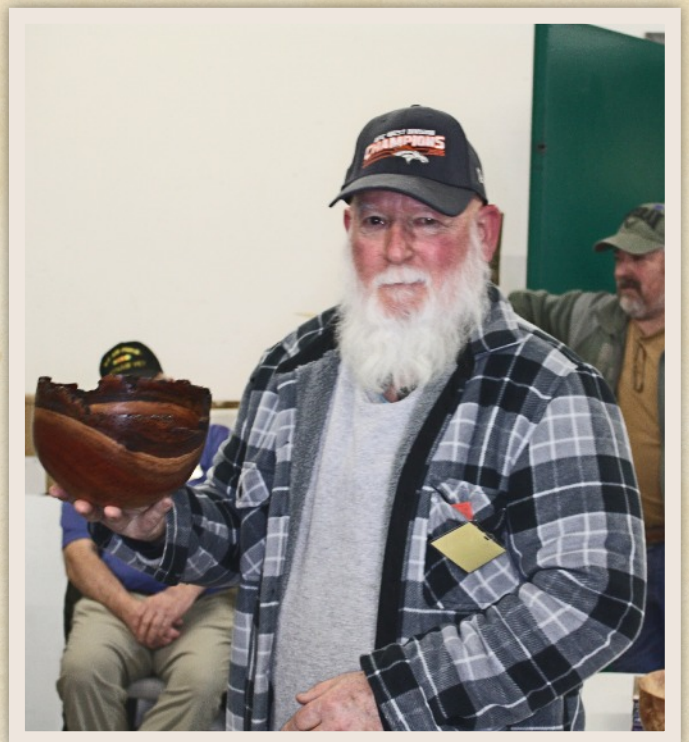




# DAN OLIPHANT



Dan brought in this Red Eucalyptus natural edge bowl. He finished it with lacquer. Dan told us he stabilized the bark with CA glue.





# TRUDY WEBB



Top left is a bowl Trudy made that she didn't like, so she antiqued it. Then some petroglyph's for a final touch. The bowl is Sycamore. 2 3/4" high, 3 3/4" diameter. Top right is a Tulip wood vase. Her neighbor gave her some trimmings from his tree. The Goldfinch finishes the vase. 6" high, 3" diameter. Bottom left is a Russian Olive bowl, finished with linseed oil.

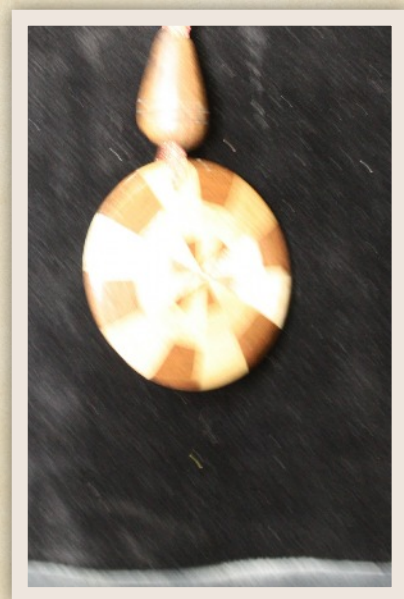




## WAYNE REXFORD



Wayne told us that when he was in Portland, at the AAW symposium, he bought a book. The book is "Turning Segmented Wooden Bangles on the Wood Lathe" by Don Jovag. Wayne used his segmenting skills and idea's from the book and made multiple pendent's using the mule (top left picture). The pendent blanks are attached to the mule with double sided tape so Wayne can run it through the band saw. He gets 4 pendent's per pass. I didn't look close at the pendent's when I took the pictures. When I was working on the newsletter I could see the detail of Wayne's segmenting work. It is a 12 section ring, but notice the different colored woods that are different widths, giving the pendent a lot of character.





# JOHN SACKUVICH



John made this Ice Cream scoop with a Walnut handle. He put six coats of CA. glue to finish the handle.

# MARSHA BAKER



Marsha visited Hawaii and brought back 40 lbs. of wood. The ring bowl above is 3 1/2". The wood is Kiawe. It is unfinished now. Marsha told us she finished the foot at an angle, so the bowl tilts forward, making it easier to pick up the ring.



## Bowl Exchange



Liz made the turning for the bowl exchange. Connis is the happy winner of a sea urchin ornament.



# Happy Raffle Winners









## Break Time

My wife made Peanut Butter M&M bars for our break time treat.

The M&M's are red, white and pink, for Valentines Day.



Being that it is Valentines Day next Thursday, my wife bought some chocolate treats with X's and O's on the wrapper.



Lower photo is chocolate treats shaped as hearts.





## *Club Business*

Rich told us about the upcoming AIW. He was signing up people to work. He got a good response, and most of the time slots were assigned.

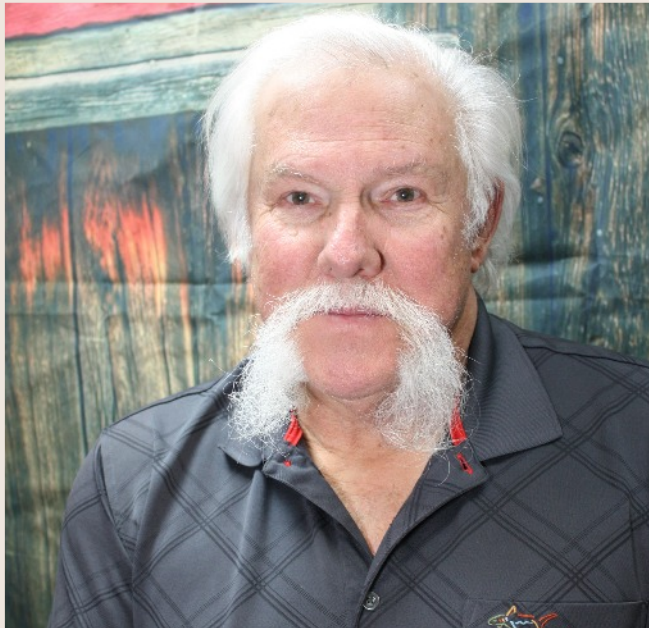
He reminded us that March 15<sup>th</sup> is coming fast, so get started on your entry's.

Aaron told us that there are a couple of delays getting the new web site up and running. They are working on it. He will let everyone know when it is up and running, and make it possible for everyone to get into the non-public side.





## New Members



I strive to be very accurate in our club's newsletter. But, as everyone knows, I do make mistakes. The paper work for the above new member has been lost, my bad. Next month I will correct it. Sorry for the lost paper work.  
Ellis



Jim Holmes



Kim Keys







Hannah Purdy



LeeAnn Garton



Greg Richardson





## Monte's Visit

Monte brought in an "Ultra Shear Pen Mill Kit". It is a new item from Woodpecker. The cutter is all carbide and works very well. He told us that he and his two son's, along with two other members of his church were on a mission to India. They went there to build a tree house for a children's orphanage. Only problem; trees don't grow in this area in India where the orphanage is. So, they used granite 4 X 4's and built the three story tree house.



He told us that there are about 800 orphans, 400 of them are considered special, because they all have aids or other health problems. Their life expectancy is mid 20's.





## Up Coming Events

### *Artistry in Wood*

**March 15,16,and 17<sup>th</sup> 2019**

#### **At JUMP, Boise**

Oregon Woodturning Symposium

March 15, 16, 17, 2019

Albany Expo Center, Albany, Or.

[Oregon Woodturning Symposium.com](http://OregonWoodturningSymposium.com)

NORTHWEST WASHINGTON WOODTURNERS presents

A Day with Mike Mahoney

COMING ON MARCH 23rd!

<http://www.nwwwt.org/MahoneyDemo.pdf>



## Fractal Burning Has Killed and Could Kill You.

(reprinted from the AAW website)

As of January 2019, we (the AAW) know of ten deaths caused using fractal, or Lichtenberg, burning.

We only know of those deaths that are reported by the media and show up in internet searches; it is highly likely there are more.

The American Association of Woodturners has banned the use of this process at all of its events, has banned articles about fractal burning in all of its publications and will not allow the display of works that were created by the process at its events.

The reported cases of fractal burning deaths range from hobbyist woodworkers through experienced woodworkers to an electrician with many years (of) experience working with electricity. It only takes one small mistake and you are dead; not injured, dead. Some of those who died were experienced at using the process and some were not. What is common to all of them: fractal burning killed them.

High voltage electricity is an invisible killer; the user cannot see the danger. It is easy to see the danger of a spinning saw blade. It is very obvious that coming into contact with a moving blade will cause an injury, but in almost all cases a spinning blade will not kill you. With fractal burning, one small mistake and you are dead.

This is true whether you are using a homemade device or a manufactured one.

There are many ways to express your creativity. Do not use fractal burning. If you have a fractal burner, throw it away. If you are looking into fractal burning, stop right now and move on to something else. This could save your life.

—Rick Baker, Chair, AAW Safety Committee

—Harvey Rogers, AAW Safety Committee

